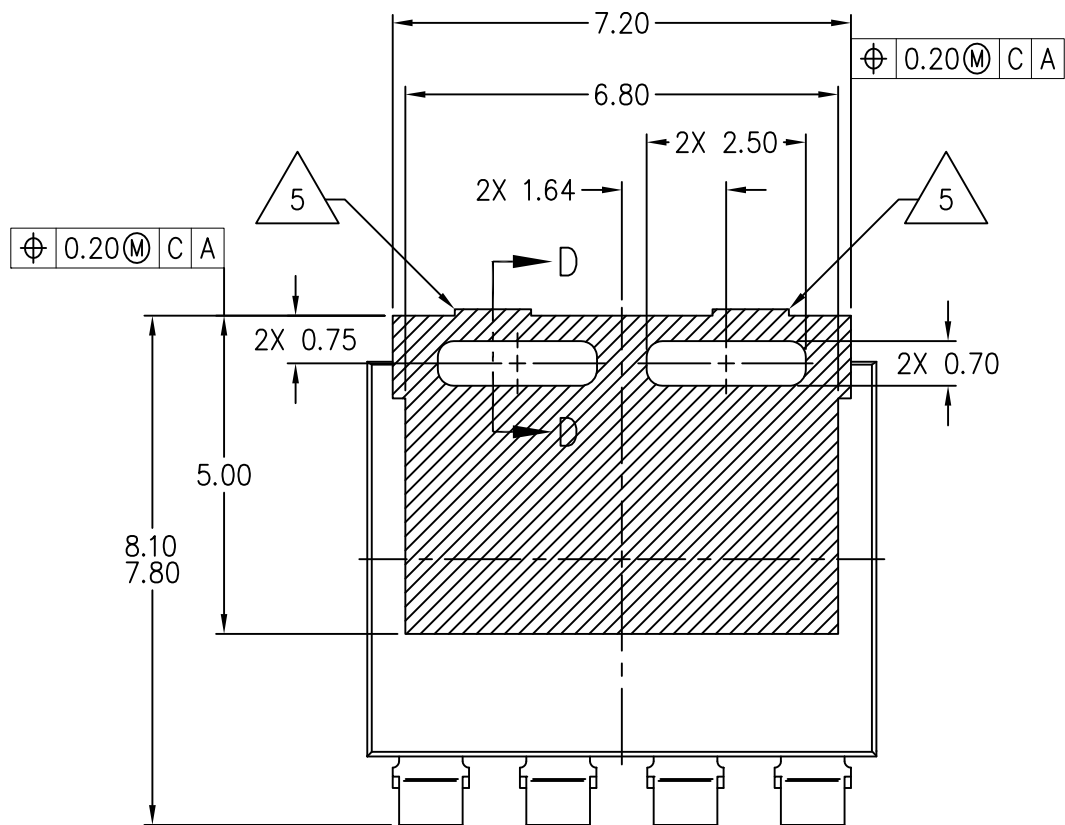
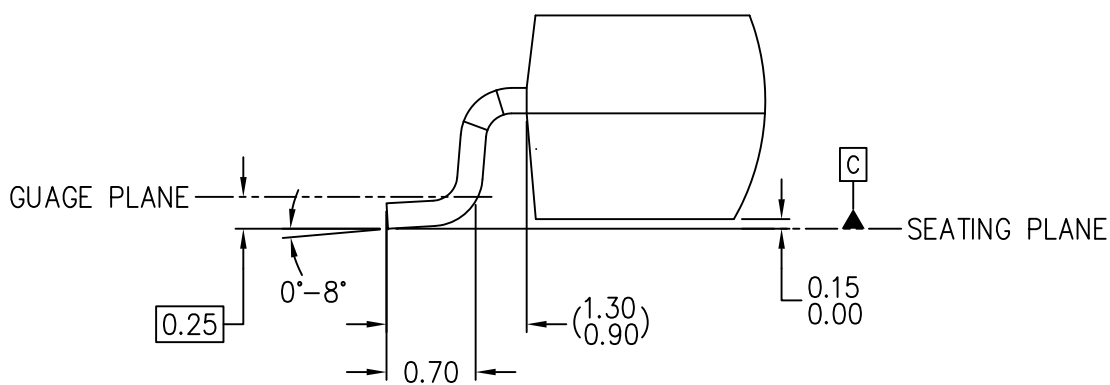


THIS *REGISTERED OUTLINE* HAS BEEN PREPARED BY THE JEDEC JC-11 COMMITTEE AND REFLECTS A PRODUCT WITH ANTICIPATED USAGE IN THE ELECTRONICS INDUSTRY; CHANGES ARE LIKELY TO OCCUR.

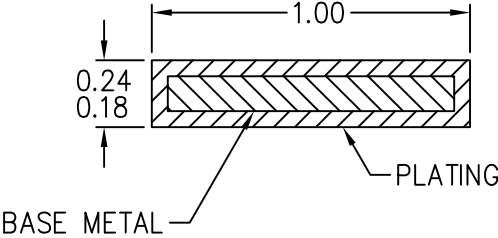
SHEET
1 OF 4



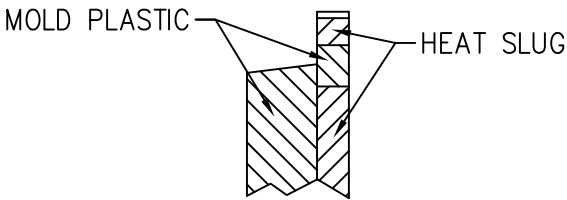
VIEW A-A



DETAIL B
ROTATED 90° CW



SECTION C-C



SECTION D-D

NOTES:

- 1. DIMENSIONING AND TOLERANCING PER ASME Y14.5–2009.
- 2. TOLERANCE ON ALL DIMENSIONS ± 0.10 UNLESS OTHERWISE SPECIFIED.
- 3. DIMENSIONS ARE IN MILLIMETERS (ANGLES IN DEGREES).

4 BODY DIMENSIONS, (6.20 X 8.00) DO NOT INCLUDE MOLD FLASH OR METAL PROTRUSIONS. THESE DIMENSIONS ARE MEASURED AT THE OUTERMOST EXTREMES OF THE PLASTIC BODY.

5 THE LOCATION AND SIZE OF METAL PROTRUSIONS ARE OPTIONAL.

6 THE LOCATION AND SIZE OF EJECTOR MARKS ARE OPTIONAL.

7 THE TERMINAL WIDTH DIMENSION DOES NOT INCLUDE DAMBAR PROTRUSION. ALLOWABLE DAMBAR PROTRUSION SHALL BE 0.10MM TOTAL IN EXCESS OF THE TERMINAL WIDTH MAXIMUM MATERIAL CONDITION. THE DAMBAR MAY NOT BE LOCATED ON THE LOWER RADIUS OF THE FOOT.

STP (3D) FILE RECORD

3D FILE NAMES MAY EXCEED LENGTH REQUIREMENTS FOR SOME SOFTWARE TOOLS.

STP FILE NAME	DATE	ITEM NUMBER
TO-283A_PDFM-E5_l2p0-R8p0x6p2Z1p6	AUG 2024	11-1060

TASK GROUP CONTRIBUTORS

NEXPERIA

JEDEC SOLID STATE PRODUCT OUTLINE Copyright © 2024 JEDEC	TITLE PLASTIC DUAL FLANGE MOUNT, 2.00 MM PITCH RECT PACKAGE (TRANSISTOR)	NUMBER TO-283	ISSUE A	DATE AUG 2024	SHEET ii
--	---	------------------	------------	------------------	-------------

CHANGE RECORD

IF THE CHANGE INVOLVES ANY WORDS ADDED OR DELETED (EXCLUDING DELETION OF ACCIDENTALLY REPEATED WORDS), THE CHANGE IS TO BE INCLUDED BELOW. PUNCTUATION CHANGES MAY OR MAY NOT BE INCLUDED.

INITIAL ISSUE: A	DATE: AUGUST 2024	ITEM NUMBER: 11-1060
------------------	-------------------	----------------------

CHANGE RECORD HISTORY:

ISSUE: -	DATE: -	ITEM NUMBER: -
----------	---------	----------------

LOCATION:	CHANGED FORM:	CHANGED TO: